

SURFACE PREPARATION

The vehicle surface must be properly prepared prior to installation of the graphics. All surfaces **MUST** be cleaned before any application of vinyl material. Use the following steps:

1. For best results the installation should take place in temperatures ranging from 50 to 90 degrees Fahrenheit. Do not install outdoors if winds exceed 10 mph. Blown dirt, dust, or other contaminants can interfere with the bonding of the graphic adhesive to the vehicle during installation.
2. Wash the surface of the vehicle with detergent and water, then thoroughly rinse with water and dry completely. **WARNING:** Do not use any aromatic solvents such as acetone, M.E.K., toluene, paint thinner, lacquer thinner, gasoline, or ammonia-based cleaners to clean the vehicle surface.
3. Saturate a clean cloth with isopropyl alcohol and wipe the surface of the vehicle where the graphic is to be applied to remove any contaminants such as silicone, wax, or adhesives.
4. Dry the surface with a lint-free cotton towel.

GRAPHIC CARE GUIDELINES

This Sharpline Fuego™ graphic is designed for superior durability and requires little maintenance. Please follow the steps below to get the best performance.

Wash your graphic with soap and water or car wash detergents. Rinse thoroughly.

Keep high-pressure nozzles at least 1 1/2 feet away from the edge of the graphic when washing. High-pressure spray can lift the edge of the graphic and cause it to peel.

DO NOT overcoat the graphic with clear coat of any kind.

DO NOT let gasoline or other fuels drip or stay on the graphic for any length of time. If a spill occurs, wipe off the graphic and rinse with water immediately.

DO NOT use petroleum based solvents on your graphics. They will soften the vinyl and damage the color.

DO NOT apply wax over graphics, especially if the wax contains any petroleum or silicone distillates. Car wax will not improve the finish of graphics and can damage the surface after repeated exposure. If you wax your vehicle, wax that has dried along the edge of the graphic can be removed by first softening it with rubbing alcohol and cotton swabs. Be sure to rinse the area after cleaning.



99222-55



FUEGO INSTALLATION INSTRUCTIONS

You have purchased and are about to install one of the finest automotive aftermarket graphics manufactured today. When properly applied, you can expect a Sharpline Fuego™ graphic to last for years under normal conditions.

For best results, please read this instruction sheet in its entirety before installation. Pay special attention to the Surface Preparation and Graphic Care Guidelines found on the back page.

While there are several acceptable methods to install vinyl graphics, this instruction sheet details what, in our opinion, is the best method. Novices and professionals alike can find the installation steps detailed here useful in providing the most efficient, error free graphic application possible.

BEFORE INSTALLATION

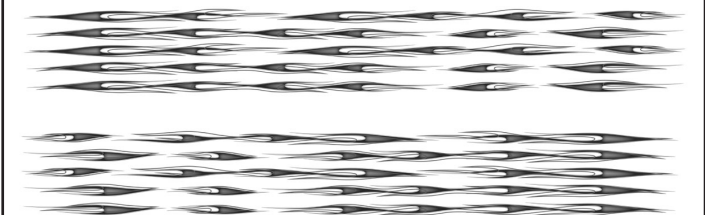
Read this instruction sheet in its entirety.

Be sure you have these items:

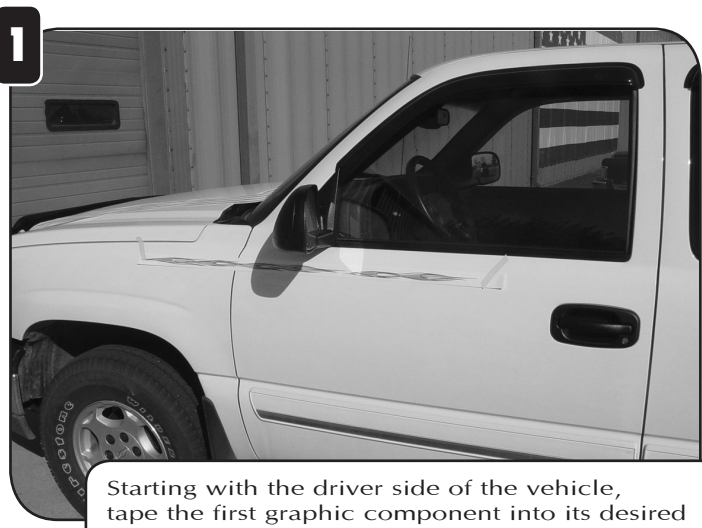
- 1- Squeegee**
- 1- Snappy™ knife**
- 3/4" Masking tape**
- Isopropyl alcohol and clean cotton rags**

PACKAGE CONTENTS

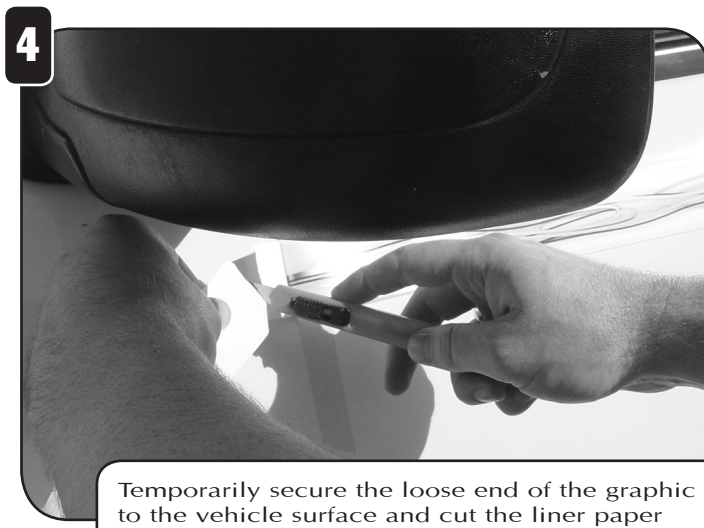
Your Sharpline Fuego™ kit contains the following:



Prior to installation, carefully trim apart the graphic components. Separate the components into driver-side and passenger-side groups, and begin installation on the driver's side.



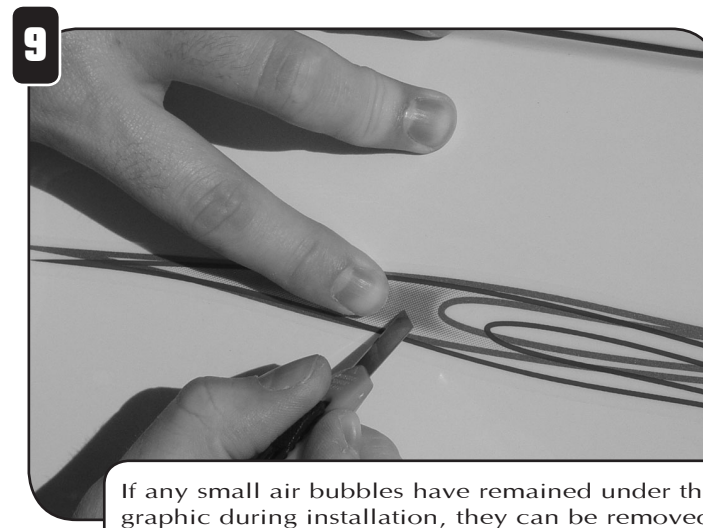
1 Starting with the driver side of the vehicle, tape the first graphic component into its desired location.



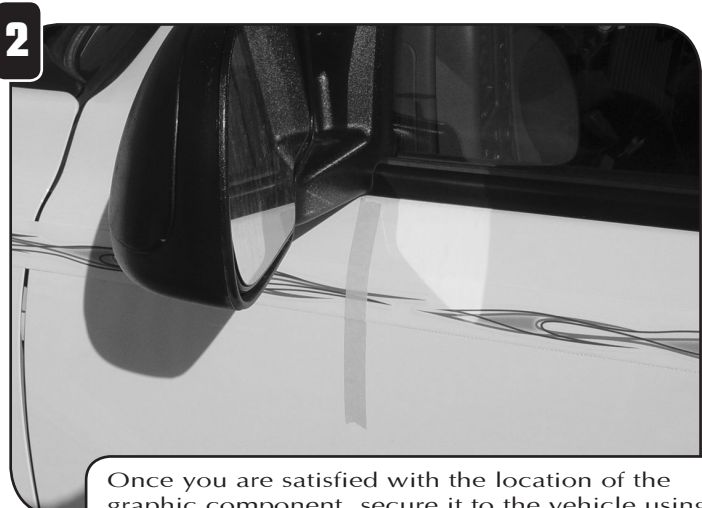
4 Temporarily secure the loose end of the graphic to the vehicle surface and cut the liner paper (backing paper) near the center hinge and discard.



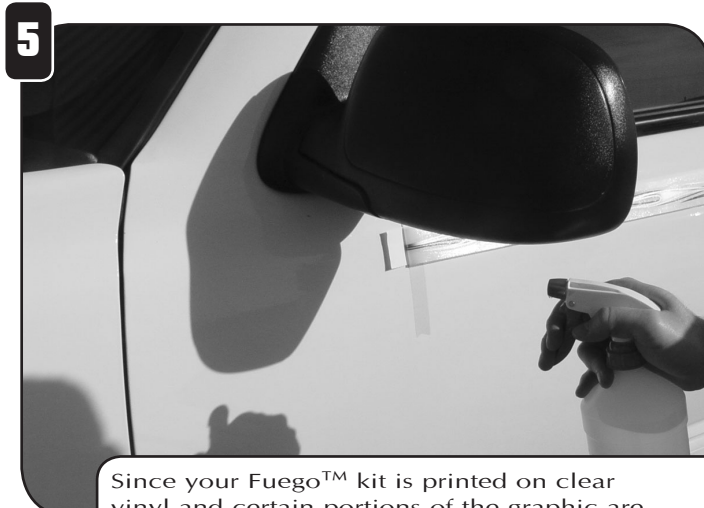
7 Remove the masking tape 'hinge' from the center of the graphic component. Then remove the remaining liner paper (backing paper) from the graphic component and discard. Squeegee the remaining half of the panel onto the vehicle utilizing the same method described in step #5.



9 If any small air bubbles have remained under the graphic during installation, they can be removed by pricking the base of the bubble with the knife blade and squeezing out the trapped air with the tip of your finger.



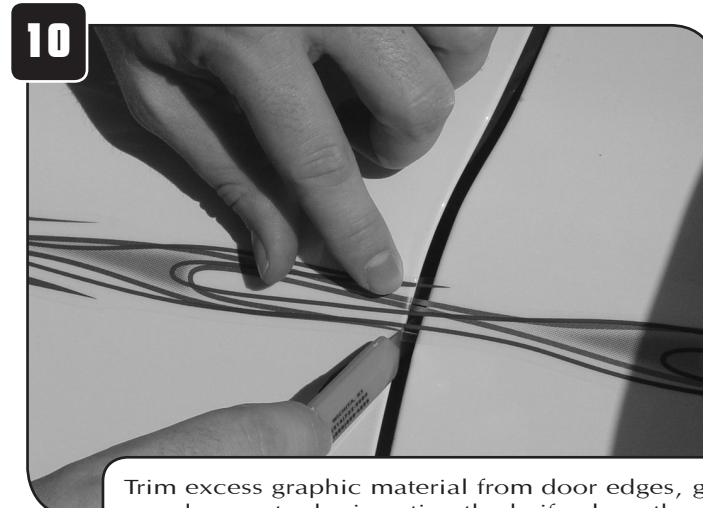
2 Once you are satisfied with the location of the graphic component, secure it to the vehicle using the "center hinge" method. Start by running a strip of masking tape through the center of the component. Then secure each end of the component with another piece of masking tape.



5 Since your Fuego™ kit is printed on clear vinyl and certain portions of the graphic are transparent, we recommend doing a "wet" installation using a 1/3 isopropyl alcohol, 2/3 water solution.



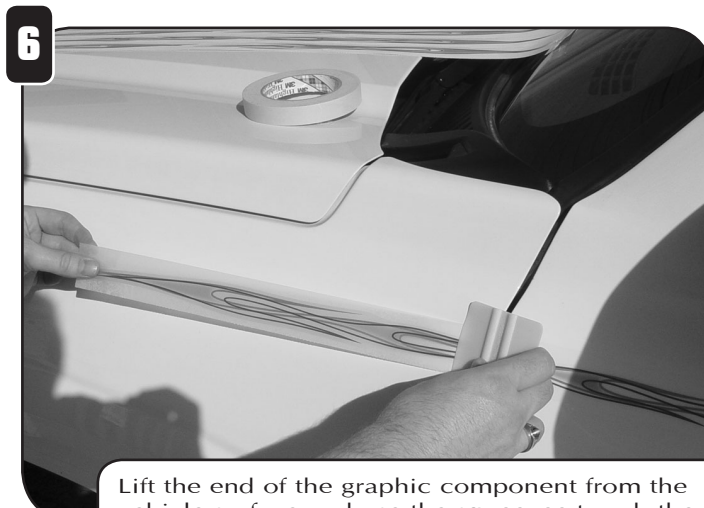
8 Remove the clear transfer masking by pulling it back at a 180-degree angle from the vehicle surface in a slow, smooth, and steady motion.



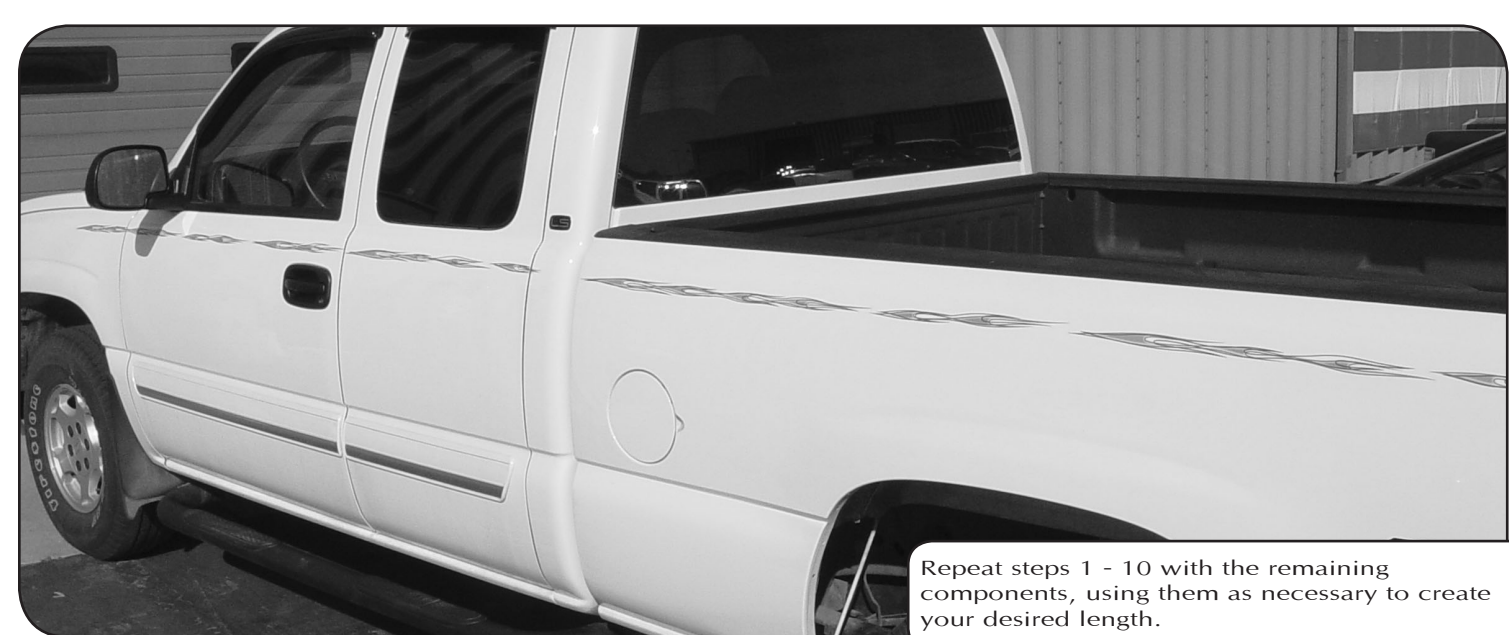
10 Trim excess graphic material from door edges, gas cap doors, etc. by inserting the knife along the edge of the material at a 45-degree angle. Then, carefully cut through the vinyl on both sides of the seam and discard the scrap material.



3 Remove the positioning tape on one side of the center hinge and peel the masking and the graphic away from the liner paper (backing paper) for this portion of the graphic.



6 Lift the end of the graphic component from the vehicle surface and use the squeegee to rub the graphic into place using short, overlapping strokes that go vertically from the center of the graphic to the edge. Be sure to start at the hinged area and move toward the end.



Repeat steps 1 - 10 with the remaining components, using them as necessary to create your desired length.